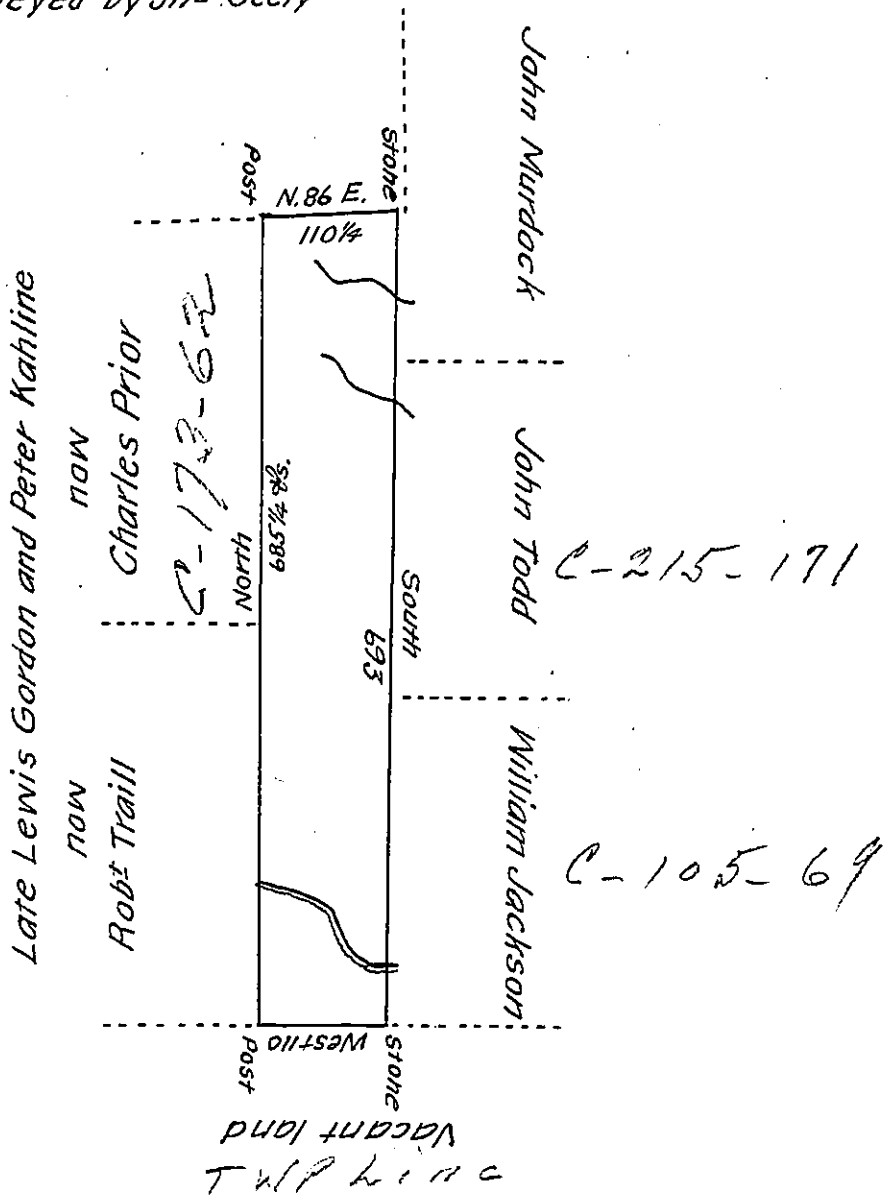


Land said to belong to Chas
Hunt Surveyed by Jno Seely
and



By virtue of a warrant dated the 9th October 1788 Surveyed
the 10th November 1788 to Edward Rowly the above described tract of land
situate on a small Eastwardly branch of the West branch of Leckawax-
sin Creek in Northampton County Containing four hundred and forty-six
Acres One hundred and fifty-five perches & the allowance of Six $\frac{1}{2}$
Cent. &c. &c.

P. Geo. Palmer, —

John Lukens, Esq^r }
Surveyor General. }

IN TESTIMONY that the above is a copy of the original remaining on file in
the Department of Internal Affairs of Pennsylvania, made
comformably to an Act of Assembly approved the 16th day of
February 1833, I have hereunto set my hand and caused
the Seal of said Department to be affixed at Harrisburg,
this third day of July 1907.

Henry Howell
Secretary of Internal Affairs.